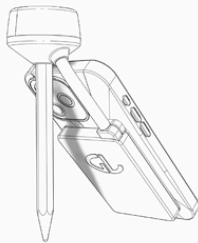
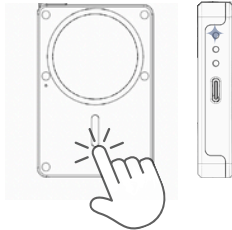


## 1. Turning on

To power on the receiver, touch the straight white magnet briefly, release, and then touch and hold until the further right LED below turns from purple to blue. Blue blinking means the receiver is on and waiting for a connection to your phone.

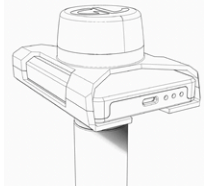


## 3. Pole Adaptor (Pro)

For a classical survey on a pole, use GLRM Pro version. It comes with a pole adaptor featuring a built-in antenna. Remove the original antenna and insert the GLRM into the adaptor. The side with the logo should be on the top.

## 2. Survey Setup

For the mobile survey setup, insert the antenna into the GLRM. Position GLRM on the back of your iPhone (through a magnetic attachment). For Android, you can use a magnetic case. Screw in the minipole for long-term static measurements.



Software Partners:

### GLRM Connect

Install GLRM Connect App (Android, iOS) to get firmware updates and device information.

### Fieldwork Apps

GLRM is compatible with a range of GIS and survey apps, both iOS and Android.

### Follow Us

We continuously expand our knowledge base for the users. Check our social media for the updates.

### Get in Touch

Sales and partnerships:  
[sales@general-laser.at](mailto:sales@general-laser.at)  
Technical support:  
[support@general-laser.at](mailto:support@general-laser.at)